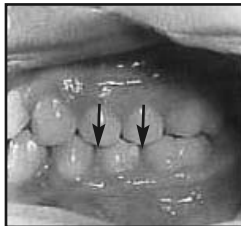


The facial embrasure between their class counterpart **and the tooth distal to it**

*** See picture below

Examples:

1. The facial cusp tip of a **maxillary first premolar** opposes the facial embrasure **between** the mandibular first and second premolars (*see note below*).
2. The facial cusp tip of a **maxillary second premolar** opposes the facial embrasure **between** the mandibular second premolar and mandibular first molar.



Note: During lateral excursive movements, the facial cusp ridge of the maxillary first premolar **on the working side** opposes the distal cusp ridge of the first premolar and the mesial cusp ridge of the second premolar.